

Eleganza



A composição do fio Eleganza, com 85% acrílico e 15% de poliamida, resulta em peças que unem volume, toque suave e leveza incomparáveis. Ideal para máquinas de finuras média e grossa, que produzem peças leves, com boa cobertura e o máximo de conforto.

Características

Composição: Acrílico 75% / Poliamida 25%

Simbologia: PAC 75% / PA 25%

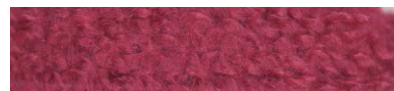
Título: 6 Nm

TEX: 167

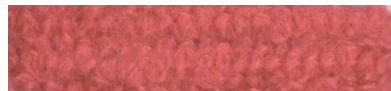
Branco
20-001



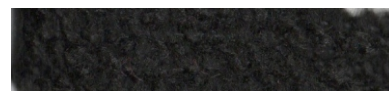
Borba
20-629



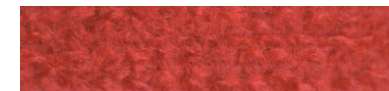
Rosa Brilhante
20-628



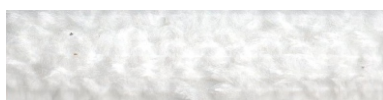
Preto
20-901



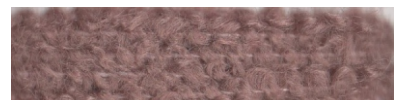
Grosetha
20-304



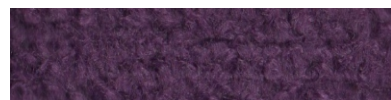
Off White
20-003



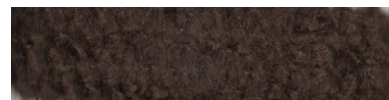
Capucino Escuro
20-308



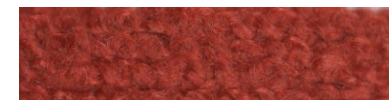
Prune
20-610



Terra
20-803



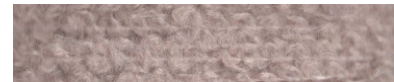
Cobre Escuro
20-330



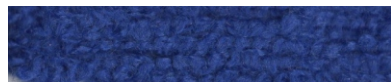
Bege Pombo
20-104



Nude
20-315



Royal
20-413



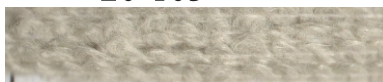
Castanho Escuro
20-801



Monte Carlo
20-302



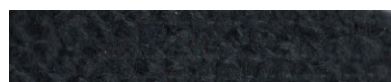
Concha
20-103



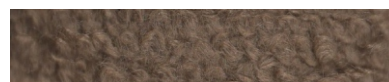
Nude
20-315



Marinho Blue
20-417



Marrom Canguru
20-805



Vermelho Fogo
20-331



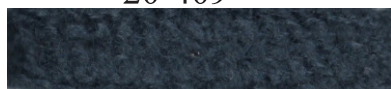
Areia
20-102



Rosa Empoeirado
20-328



Azul Noite
20-409



Tornado
20-108



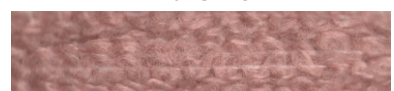
Aguapé
20-517



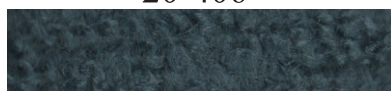
Bege Linho
20-101



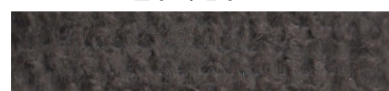
Rosa Deserto
20-318



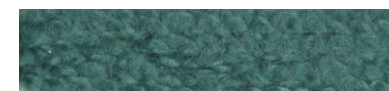
Mediterrâneo
20-406



Cinza Guza
20-710



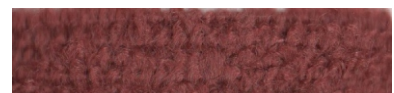
Verde Anade
20-512



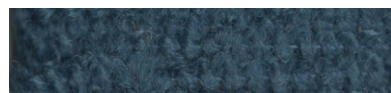
Amarelo Aurora
20-207



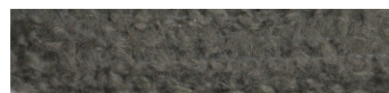
Borgonha
20-329



Jeans
20-403



Grafite
20-704



Forest
20-521



Ouro
20-211



Rosa Deserto
20-318



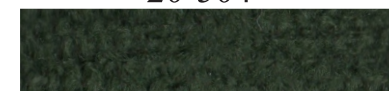
Atlântico
20-416



Cinza Prata
20-705



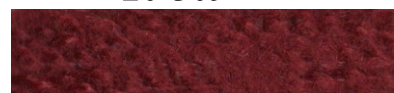
Pinheiro
20-504



Vermelho Bromélia
20-323



Bordeaux
20-309



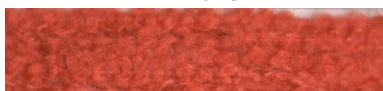
Azul Aéreo
20-414



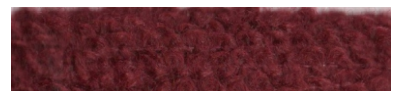
Prata
20-702



Vermelho Aurora
20-312



Marsala
20-305



Azul Balsamo
20-408



Verde Militar
20-503

